

BCK Holland B.V.

Spuieweg 24
5145 NE Waalwijk
The Netherlands

[T] +31(0)416 673 880
[F] +31(0)416 673 888
sales@bckholland.com
www.bckholland.com

KvK : 18076783
VAT nr : NL813897075B01
Bank nr : ING 67.65.07.611
BIC : INGBNL2A
IBAN : NL32INGB0676507611

BCK Mini Conveyors Configurator 360

Manual

Version 1.0



Inhoud

1. General.....	2
2. BCK Mini belt conveyor Configurator	3
3. Configuration of the 3D model	4
4. Set Limits	4

1. General

The BCK Configurator 360 aims to quickly configure 3D models and download them for use in custom 3D designs.

The 3D models can be downloaded as STEP or SAT file.

It is also possible to request an advice or quotation of the configured model.

Standards were assumed when designing the configurator. There are many more options outside the standards. If you want a different belt color, the motor or legs of the support in a different location, shorter side guides, etc., please contact the sales department.

No rights can be derived from the configured models. Upon a quotation request, your configured model will be assessed by BCK Holland B.V.

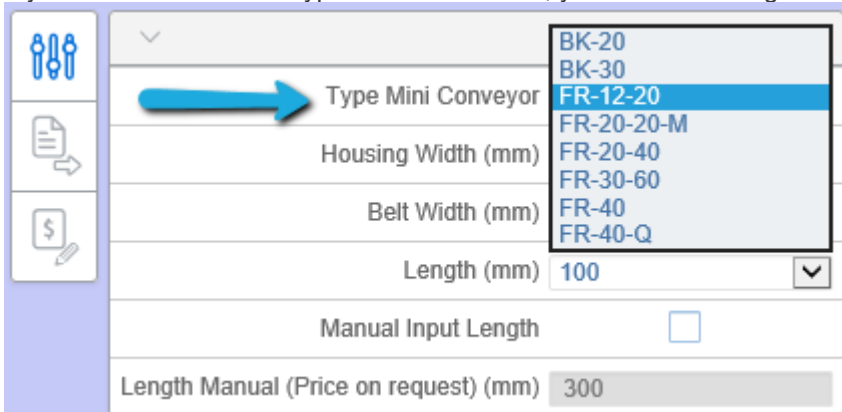
2. Configurator contains 8 types of mini belt conveyors

The configurator is accessible from the BCK website where no registration or login is required. The direct link to the mini belt conveyors configurator is <http://www.bckholland.com/en/configurator-mini>.

This mini belt conveyor configurator contains the following 8 types:

1. BK-20
2. BK-30
3. FR-12-20
4. FR-20-20-M
5. FR-20-40
6. FR- 30-60
7. FR-40
8. FR-40-Q

If you choose one of the types via our website, you can still change the type in the configurator:

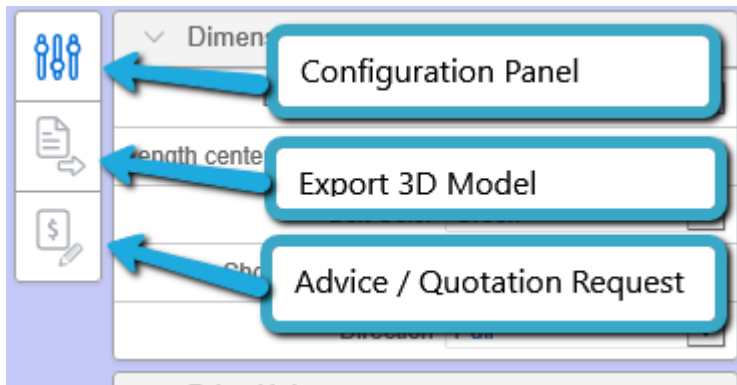


The screenshot shows the configurator interface with a dropdown menu open for 'Type Mini Conveyor'. The menu lists the following options: BK-20, BK-30, FR-12-20 (highlighted), FR-20-20-M, FR-20-40, FR-30-60, FR-40, and FR-40-Q. Other fields include 'Housing Width (mm)', 'Belt Width (mm)', 'Length (mm)' (set to 100), 'Manual Input Length' (checkbox), and 'Length Manual (Price on request) (mm)' (set to 300).

More information about the mini belt conveyors can be found at:
<http://www.bckholland.com/en/products/belt-conveyors/mini-conveyors>

2. BCK Mini belt conveyor Configurator

After you have clicked on the link you will be redirected to the BCK Holland website. If you do not see the configurator immediately, press F5 to refresh the page. The first loading time takes on average 10 to 20 seconds. On the left you will find the input screen by which you can configure the belt conveyor.

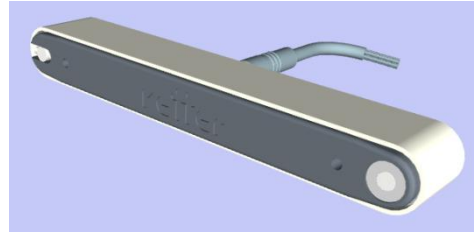


1. **Configuration panel**, Control panel, this is open by default. If you have exported a 3D model or have made an Advice / Quotation request, you can call up the configuration screen again via this button.
2. **Export 3D Model**, This allows you to export your configured model to a STEP or SAT file.
3. **Advice / Quotation Request**, if you want advice whether your configured model meets the requirements and / or you want a quote, you can do that via this button. The configured model is then saved so that BCK Holland can assess it.

3. Configuration of the 3D model

The fully expanded configuration screen looks like this

Type Mini Conveyor	FR-12-20	▼
Housing Width (mm)	20	▼
Belt Width (mm)	17	
Length (mm)	100	▼
Manual Input Length	<input type="checkbox"/>	
Length Manual (Price on request) (mm)	300	



By making a choice from the drop-down menus or changing a value, the 3D model will be adjusted immediately. This takes around 1 to 10 seconds.

This direct adjustment is necessary because further options can be depended on the choices made.

The mini belt conveyors can generally be delivered quickly with the standard sizes. It is also possible to specify a specific length with “Manual Input Length”. Ask about the delivery time to avoid disappointment.

With the following types, it is only possible to configure the length:

1. BK-30
2. FR-12-20
3. FR-20-20-M
4. FR-20-40
5. FR- 30-60

With the following types, it is possible to configure the length and width:

1. BK-20
2. FR-40
3. FR-40-Q

4. Set Limits

A number of rules have been set in the configurator according to our standards. Outside these standards, more is possible. If you are unable to configure your desired model due to limitations of the standards, please contact the sales department of BCK Holland B.V.

If you have a 3D Design program such as Autodesk Inventor Professional, you can also adjust the downloaded 3D models.

Pay attention! If you enter a value outside the limits, it will be adjusted automatically. Always check the values displayed in the configuration panel before you export the model.